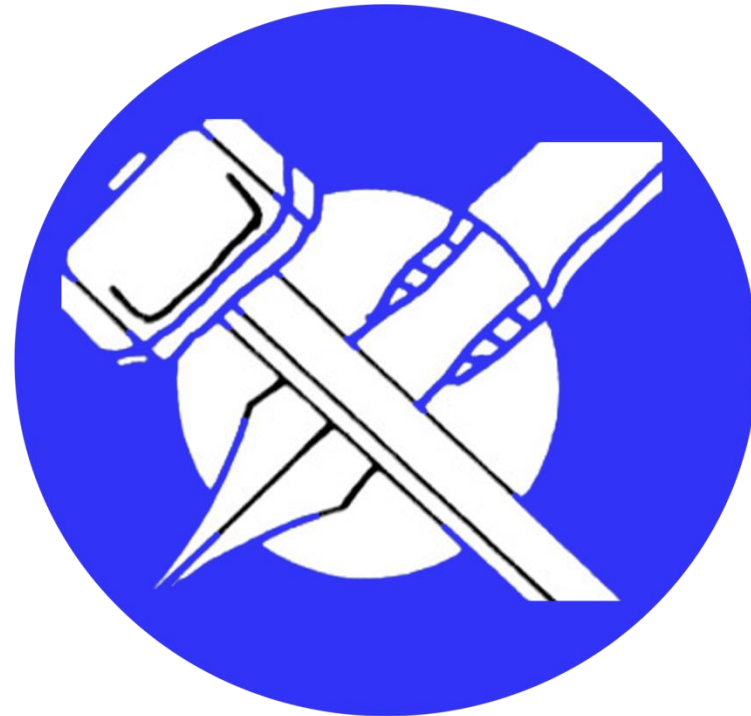


CTUM



FROM EXILED TRADE UNION MOVEMENT TO CONFEDERATION



ITUC-AP/CTUM National Workshop on Organising and Corporate Research

Solidarity Hall, Trade Union House,
Myanmar

(27,28) Sep 2018



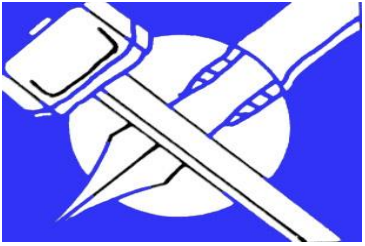
From Reuters, August 16th 1996:

Danish Burma Committee launches boycott campaign

“The Danish Burma Committee stepped up its offensive against Rangoon's military rulers on Friday, announcing the launch of a campaign to boycott companies trading with the country. Its main targets were France's Total oil group and Scandinavian Airlines System (SAS). 'The campaign urges companies to withdraw from business in Burma and calls on customers to act against the companies that continue business in the country,' committee chairman Anton Johannsen said in a statement.



12/06/2012 04:20 PM



1988 – 8888 peoples movement for Democracy – U Maung Maung left for exile

1991 – founding of the FTUB (in exile with three members)

1992 - FTUB started working with ICFTU and IUF (Dan Gallin / Anton Johansson)

1992 - FTUB attended ILC through the IUF portfolio and presented the Forced labor / Child labor / FoA status

1996 – joined Democratic Alliance of Burma and with the help of the ICFTU affiliates opened offices in - NSW / Washington DC / Tokyo - Australia Burma Council, Norwegian Burma Committee, Danish Burma Committee

2000 Nov – 279th ILO Governing Body implements article (33) Forced labor Convention 1930 (No 29). Sanctions start

2009 – ITUC member (at ITUC founding Congress in Berlin)

2010 founding Congress of FTUB (in exile)

2012 – return to Burma (LO FTF came to visit our training in 2012)

2014 Nov 28, 29 Second Congress of FTUB and founding Congress of CTUM

2015 receive Confederation registration

2015 till now Workers Delegate for Myanmar to the ILC. (most representative Trade Union)

Building up the CTUM

Strengthen / Solidify / Support

- **Strengthen - through trainings / workshops / international connections and**
- **Solidify -- Respecting pluralism, but needing to solidify to become effective.**
- **Provide legal advice LLC**
- **Provide support – (Offices + Admin) + (Awareness thru use of diff media) Orgz for 2 Yrs until achieve memberships dues.**
 - **Training schools**
 - **ITUC AP trainings**
 - **Youth trainings**
 - **Women trainings**

**Confederation of Trade Unions Myanmar CTUM.
2013 – 2018**

Member Organizations 2013

223

Member Organizations 2018

763

Organizations

Agriculture and Farmers Organizations AFA

Industrial Workers Organizations IndustriALL

**Transport Workers Organizations (Railways, Buses,
Inland Water, Cabin Crew, Seafarers)**

Construction and Wood Workers Organizations BWI

Education Workers Organizations

Aquaculture Workers Organizations

Mine Workers Organizations IndustriALL

Service Workers Organizations

Media Workers Organizations

Support Organizations

ITUC, ITUC-AP

UA Zensen Textile and Garment Federation of Japan

FES

ACTRAV

**Japan Association of Metal, Machinery and Manufacturing
workers Federation (JAM)**

Japan Municipal workers Federation JICHIRO

JILAF

Japan Trade Union Congress (JTUC)

IndustriALL / FNV

American Center for International Labor Solidarity (SC)

BWI / SASK

Care International / Fair Wear Foundation

Asia Farmers Association – AFA

CGIL-ACTRAV

FNV

LO/FTF Council

Obstacles faced by our organization

1. Union busting
2. Law lacks enforcement actions – not strong enough
3. Present workforce (22 Million working age) is way much more than the CTUM and its members – with the resources (Human as well as logistics) we have, it is very difficult to penetrate to the level where we can have 51% of the as organized workers – to achieve CBA within the Tripartite approach.

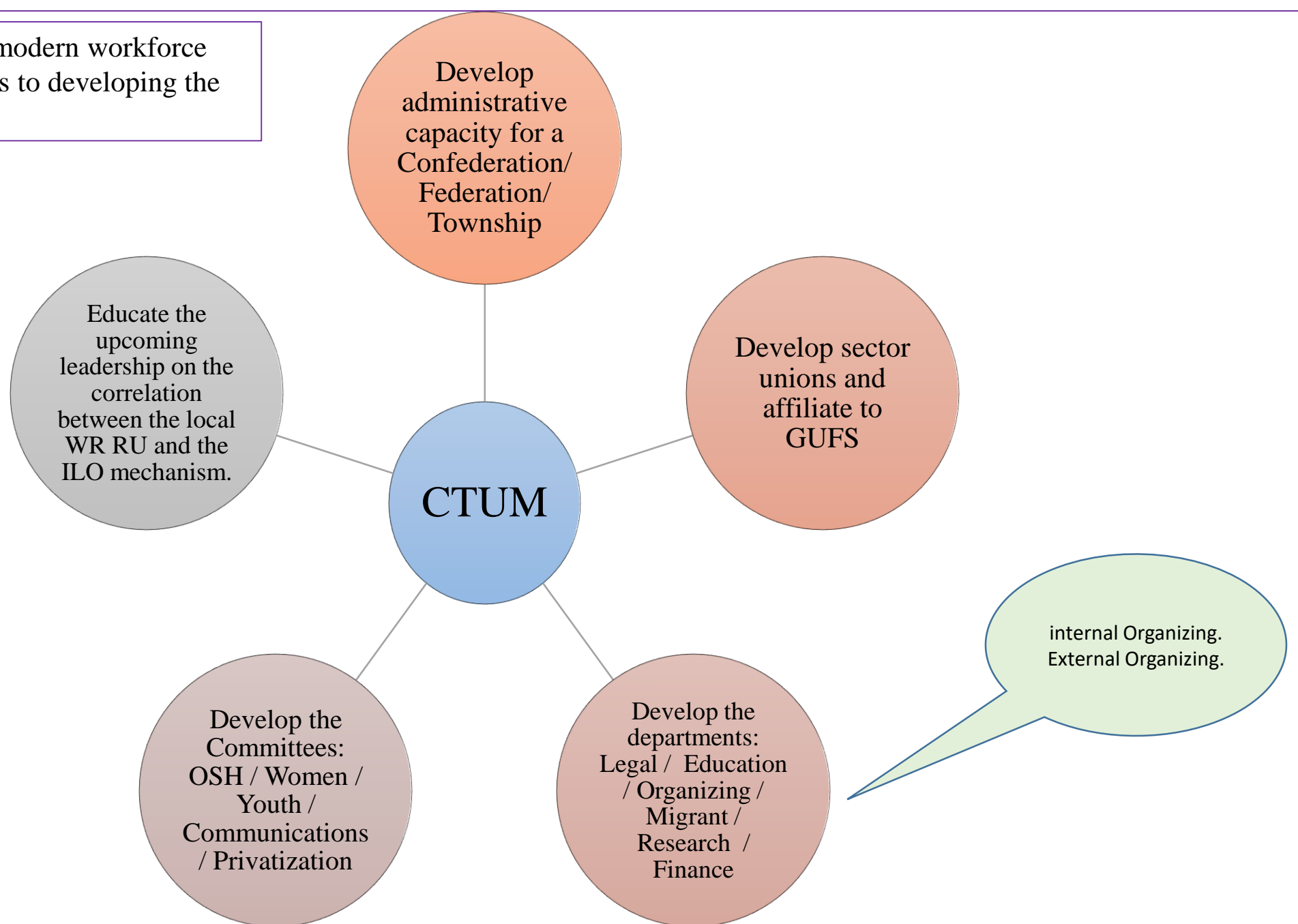
Social Enterprise -- Harvester at membership price



Members of the Agriculture unions - provided with GAP / machines at membership price

Members of the industrial zones buy at membership discount

Vision – to develop into a modern workforce
Mission – through activities to developing the CTUM as a whole.



THANK YOU!

